

CLASSIC BRASS

JAMESTOWN, NEW YORK

FLUSH PULL

ACCESSORIES



FLUSH PULL

APPLICATIONS

9725 Round Flush Pull

PRODUCT DIMENSIONS

2-1/2"

MATERIALS

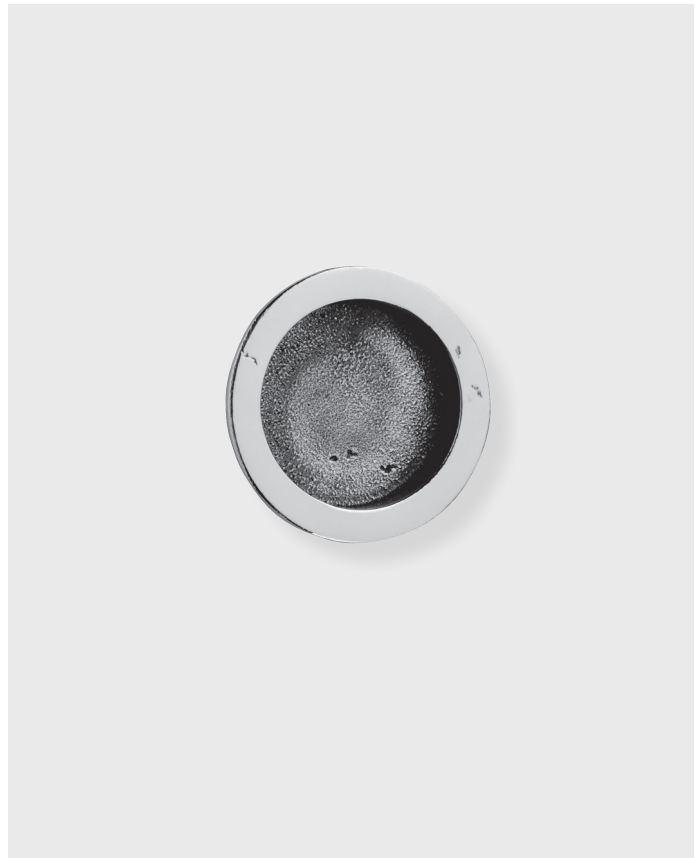
Solid Bronze

HOW TO ORDER

1. Specify application.
2. Specify finish.
3. Specify door thickness. Standard is 1-3/4".

REMEMBER

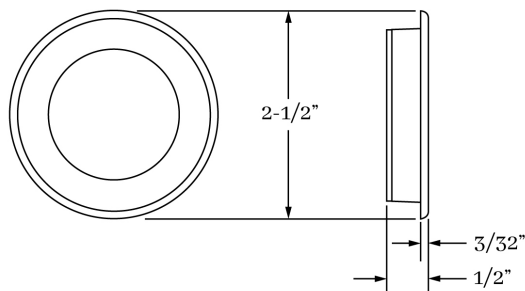
1. Verify jamb clearance for escutcheon projection.
2. Edge pulls available - Standard or Mortise.
3. Flush pull locks and edge pulls must be ordered seperately.



ACCESSORIES | DOOR

SET COMPONENTS

Flush Pull Only includes one flush pull ONLY and mounting hardware.



CLASSIC BRASS

JAMESTOWN, NEW YORK

CLASSIC BRASS

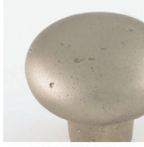
JAMESTOWN, NEW YORK

SIGNATURE FINISHES

SOLID BRONZE FINISHES



AGED IRON
(AI)



AGED SILVER
(AS)



AGED BRONZE
(AZ)



MATTE BLACK
(MB)



NATURAL BRONZE
(NB)



STERLING
(ST)

FINISHES

- Aged Iron (AI)
- Aged Silver (AS)
- Aged Bronze (AZ)
- Matte Black (MB)
- Natural Bronze (NB)
- Sterling (ST)

CUSTOM FINISHES AVAILABLE
UPON REQUEST.