

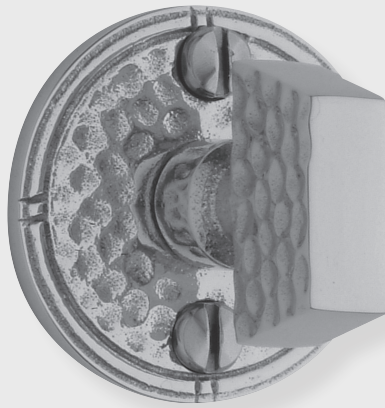
# CLASSIC BRASS

JAMESTOWN, NEW YORK

## MORTISE BOLTS

---

ARTS & CRAFTS COLLECTION



# MORTISE BOLTS

## APPLICATIONS

- 8775 Complete Mortise Bolt Set
- 8777 Turnpiece and Plate w/ Mortise Bolt
- 8779 Turnpiece and Plate

## PRODUCT DIMENSIONS

1-11/16"

## MATERIALS

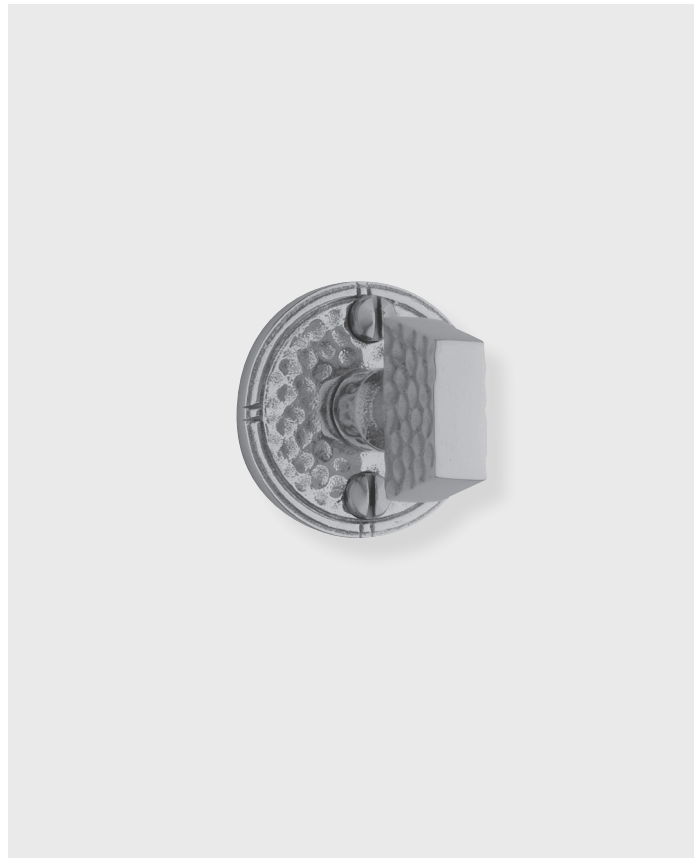
Solid Bronze

## HOW TO ORDER

1. Specify application.
2. Specify finish. If split finish is required, specify exterior/interior.
3. Specify door thickness. Standard thickness is 1-3/4".
4. Specify backset required. Standard is 2-3/8".

## REMEMBER

1. Standard backset is 2-3/8". If required, specify 2-3/4" backset.



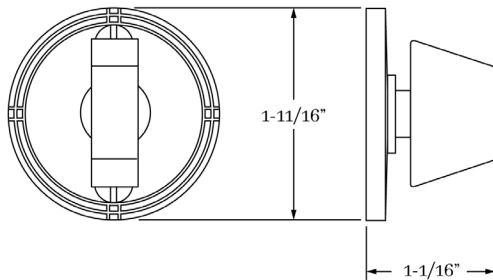
ARTS & CRAFTS | DOOR

## SET COMPONENTS

**Complete Mortise Bolt Set** includes turnpiece and plate, mortise bolt (2-3/8" backset), strike, faceplate, dust box, EE trim and mounting hardware.

**Turnpiece and Plate w/ Mortise Bolt** includes turnpiece and plate, mortise bolt (2-3/8" backset), strike, faceplate, dust box and mounting hardware.

**Turnpiece and Plate** includes turnpiece and plate ONLY and mounting hardware.



CLASSIC BRASS

JAMESTOWN, NEW YORK

# CLASSIC BRASS

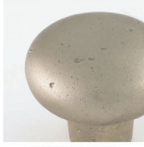
JAMESTOWN, NEW YORK

## SIGNATURE FINISHES

### SOLID BRONZE FINISHES



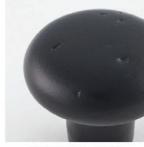
AGED IRON  
(AI)



AGED SILVER  
(AS)



AGED BRONZE  
(AZ)



MATTE BLACK  
(MB)



NATURAL BRONZE  
(NB)



STERLING  
(ST)

### FINISHES

Aged Iron (AI)  
Aged Silver (AS)  
Aged Bronze (AZ)  
Matte Black (MB)  
Natural Bronze (NB)  
Sterling (ST)

CUSTOM FINISHES AVAILABLE  
UPON REQUEST.